

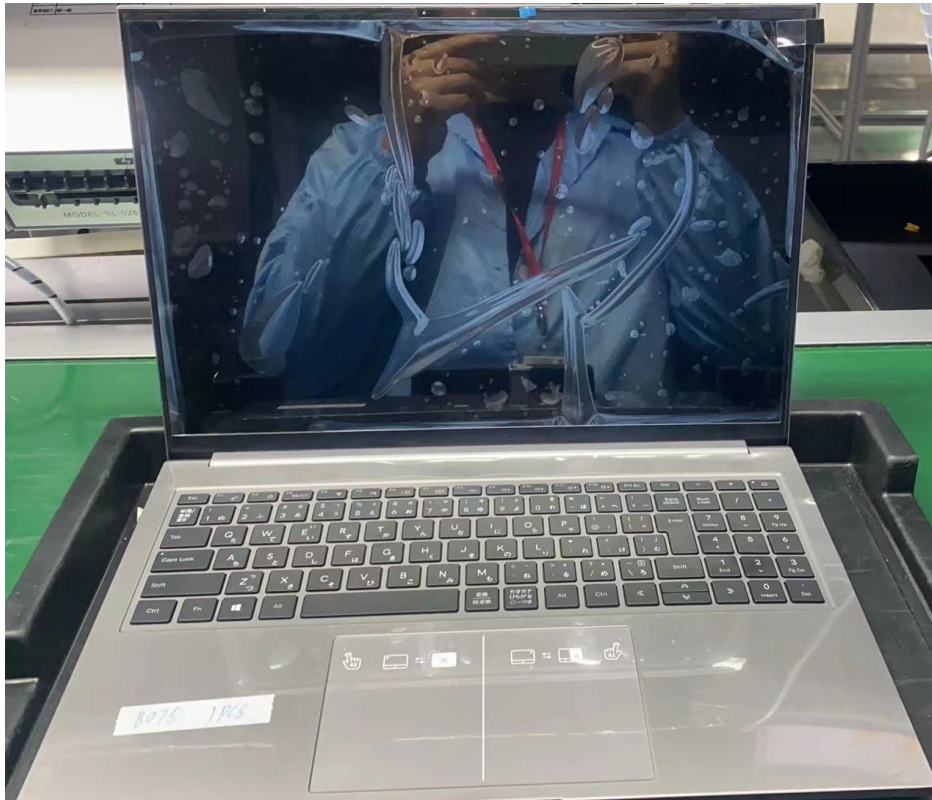
Notebook PC Service Manual

Model : PH6PG72

Chapter 4 **System Disassembly**

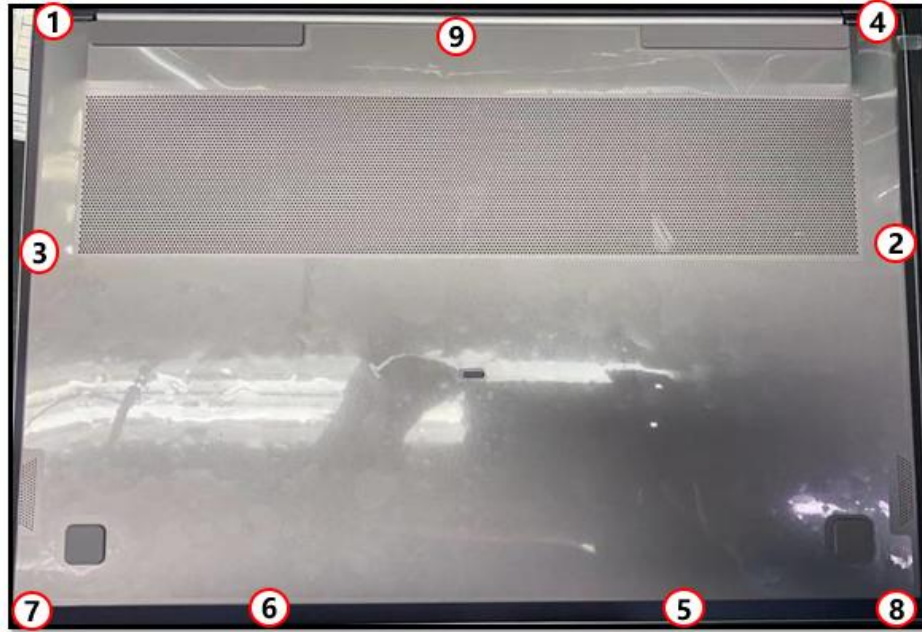
4.1. System Disassembly Procedures.....	3-7
4.2. LCD Display Panel Disassembly Procedures.....	8-9

4.1. System Disassembly Procedures



Please refer to the disassembly procedures of the PH6PG72

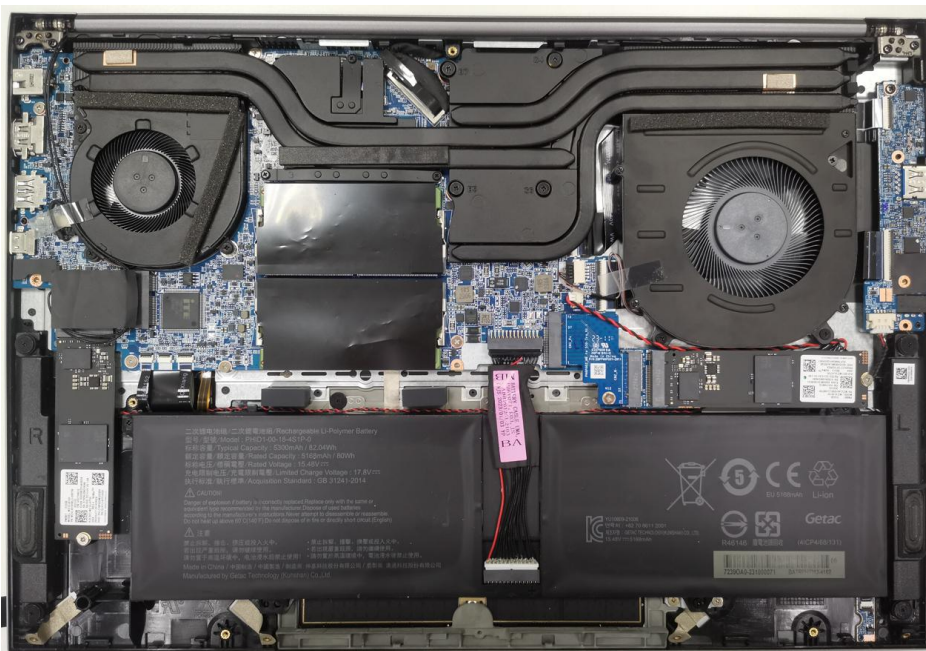


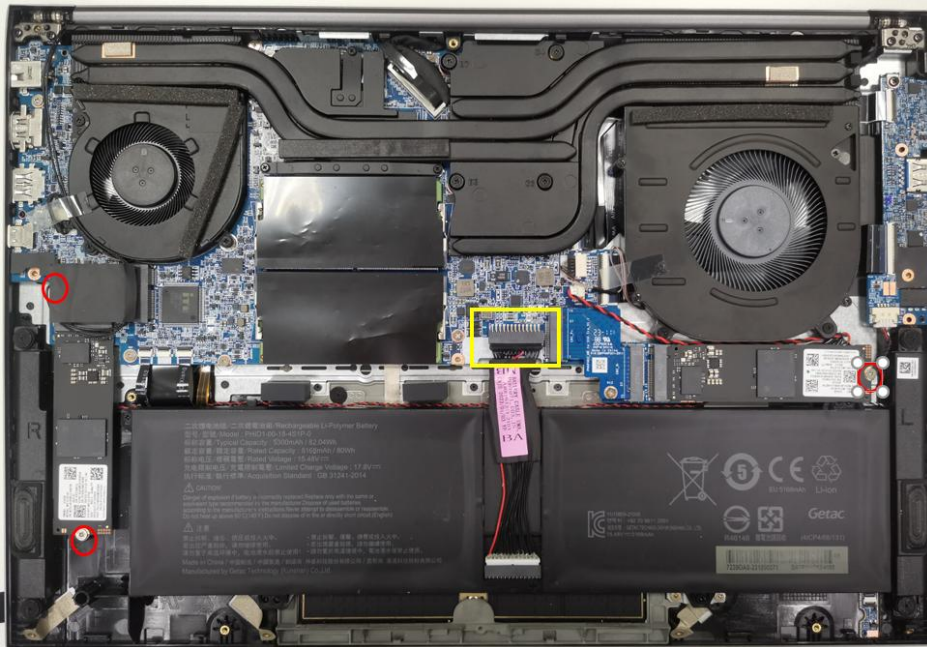


1. Unfasten nine screws and take out the bottom cabinet.

1~4 electric screw driver
torq values:
2.0±0.2 kgf.cm
1# screwdriver bit

5~9 electric screw driver
torq values:
1.5±0.2 kgf.cm
1# screwdriver bit

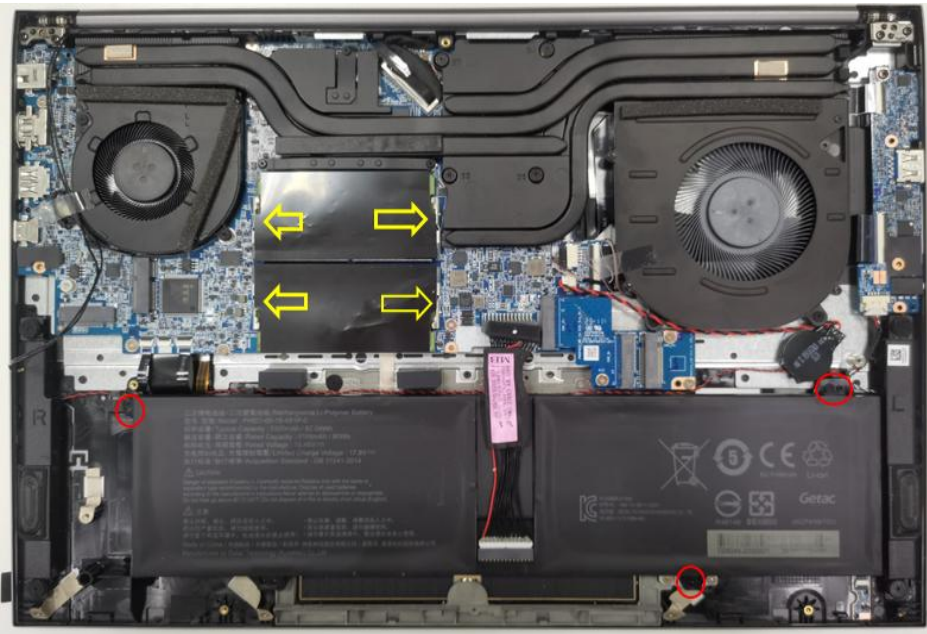




- 2. Unfasten Battery cable and Unfasten three screws disconnect the wlan antenna. take out the SSD,WLAN

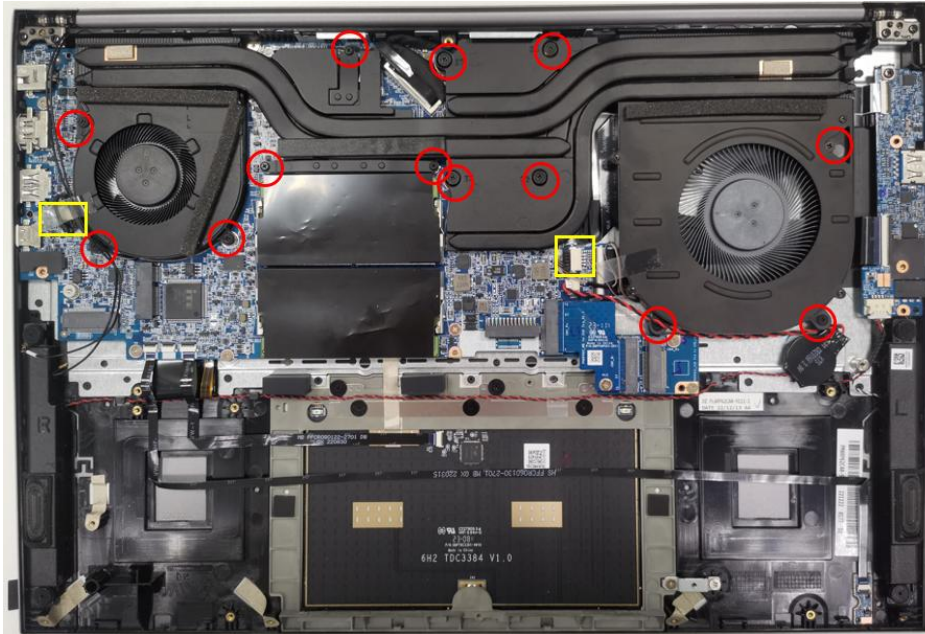
SSD electric screw driver torq values:
1.0±0.2 kgf.cm
1# screwdriver bit

WLAN electric screw driver torq values:
1.5±0.2 kgf.cm
1# screwdriver bit



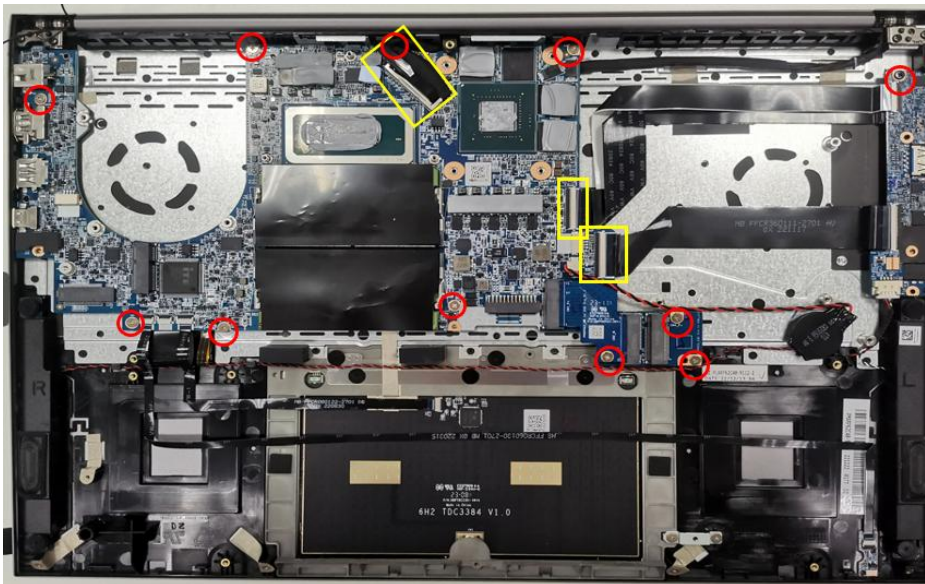
- 2. Unfasten three battery screws then pull out the battery. Unlock the RAM and take out the RAM.

electric screw driver torq values:
1.5±0.2 kgf.cm
1# screwdriver bit



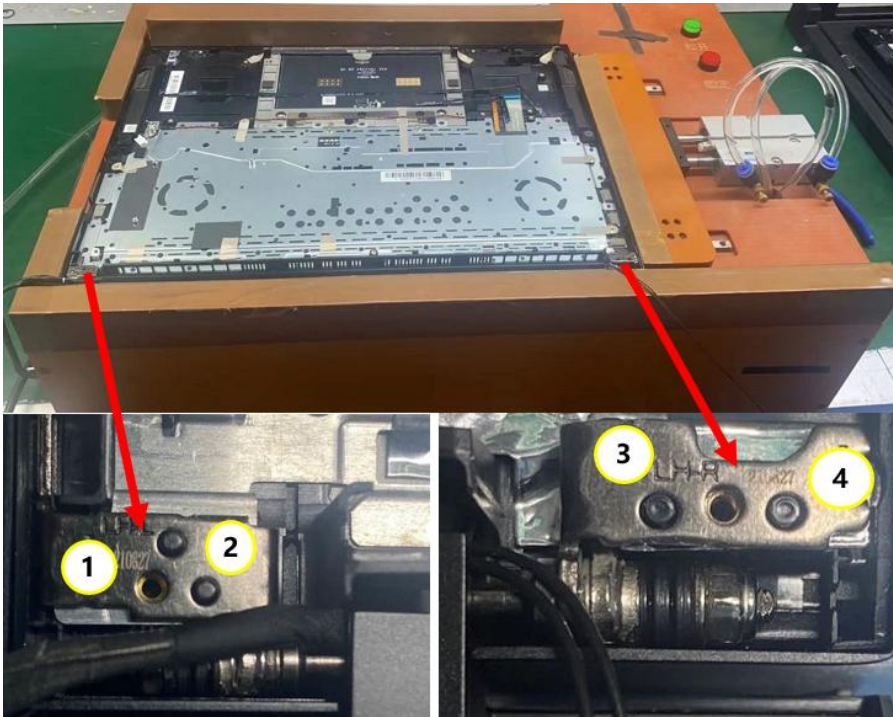
4. Unfasten thirteen screws of the FAN and the thermal module. Disconnect the cable of the Fan then remove them

electric screw driver torq values:
1.5±0.2 kgf.cm
1# screwdriver bit



5. Unfasten eleven screws & cable, take out the M/B, Audio BD.

electric screw driver torq values:
1.5±0.2 kgf.cm
1# screwdriver bit



8. Unfasten four screws and separate the LCD module from the bottom.

electric screw driver torq values:
2.0±0.2 kgf.cm
1# screwdriver bit

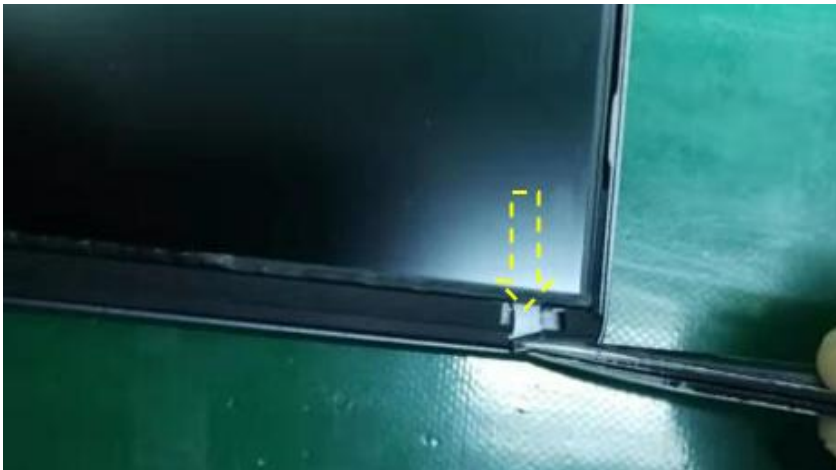


9. The LCD module.

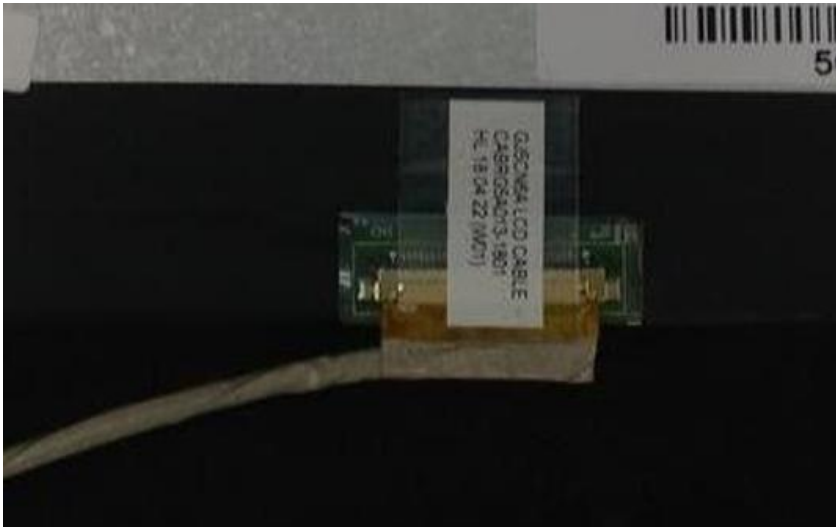
4.2. LCD Display Panel Disassembly Procedures



1. Pull up the front bezel.



2. Pull out all four corners of the LCD tape.



3. Take out LCD panel from A cover, then reverse the LCD to remove the Cable from the LCD and pull the Cable from the interface.



4. LCD display panel disassembly finished.